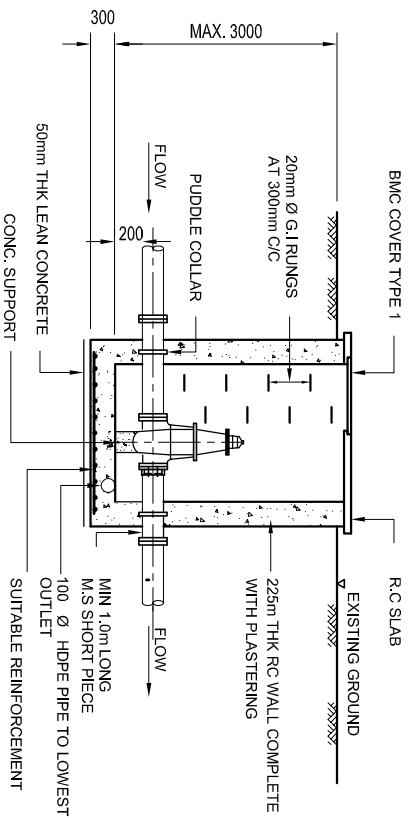
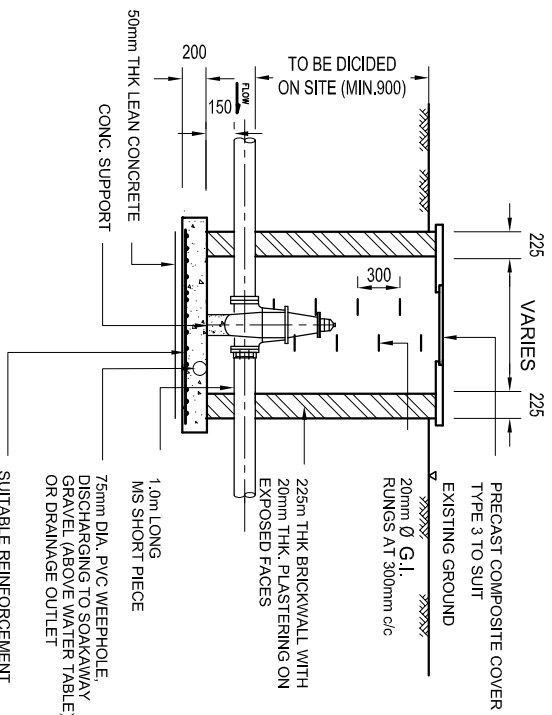


**PC CHAMBER FOR SLUICE VALVE
DEPTH LESS THAN 1.0m)**



**PC CHAMBER FOR SLUICE VALVE
AND SCOUR VALVE
(PIPE SIZE MORE THAN 600mm
AND DEPTH MORE THAN 1.5m)**



**BRICK CHAMBER FOR SLUICE VALVE
(FOR PIPE DEPTH 1m TO 1.5m)**

- NOTES:-**
1. ALL DIMENSIONS ARE IN MILLIMETRE UNLESS OTHERWISE STATED.
 2. ALL STEELWORK TO BE PAINTED WITH 2 COATS OF APPROVED ANTI CORROSION PAINT/POXY 325 MICRO DFT.
 3. LEAN CONCRETE SHALL BE OF GRADE 15/20.
 4. ALL VALVES SHALL BE OF DUCTILE IRON GRADE 500 PN 16 TO SPAN APPROVAL.
 5. FOR SLUICE VALVE CHAMBER LOCATED WITHIN THE ROAD SHALL USE RC COVER CHAMBER TO DETAILS.



SURUHJAJAYA PERKHIDMATAN AIR NEGARA
Araa Sarohi & Araa Satu
Pinnu Avenue, Blok 3510
63000 Cyberjaya
Selangor Darul Ehsan, Malaysia

PREPARED BY :

MINCONSULT SDN. BHD.
No. 6, JALAN 514/223,
SEKIDAR PERINDUSTRIAN,
51200 PERINDUSTRIAN,
SELANGOR, MALAYSIA
m i n c o TEL. 03-79575757 / 79547373
FAX 03-79547575 / 79547373

DRAWING TITLE :

TYPICAL DETAILS OF SLUICE VALVE AND
SCOUR VALVE CHAMBER
SHEET 1 OF 2

DRAWING NO.:

SPAN/MS/STD/F/002